



**Twenty-eighth Sunday in Ordinary Time  
October 15, 2017**

I can do all things  
in him who strengthens me.

— *Philippians 4:13*

**RESPECT LIFE ISSUES**

**LIFE MATTERS: DOMESTIC VIOLENCE**

Some victims of domestic abuse have a tendency to “normalize” violent behavior based on experiences in their family of origin, where they struggled with their sense of self-worth, setting boundaries, or emotional dependence. Even though the family of origin was dysfunctional, its unhealthy equilibrium may have been the only thing the person knew. Consequently, some may feel guilty about considering betraying the abuser, or fear they will be judged or further deprived of affection if they disclose or attempt to leave. These persons benefit from counseling that affirms their inherent dignity, helps them understand the dysfunctional patterns in their past and current relationships, and assists them in establishing a safe home and relationships.

**OUR LADY OF ANGELS SCHOOL**

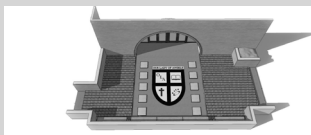
Our Lady of Angels School will begin Tuesday Tours for parents of prospective students in Grades K-8 for the upcoming 2018-2019 school year. Interested parents are encouraged to attend the school tours, which are held every Tuesday morning at 9am, beginning October 3rd and lasting through November 14th. Tours begin in the school office and last approximately one hour - no appointment necessary. Please feel free to call the school office at (650) 343-9200 if you have any questions! Applications for incoming students can be found on the website at [ola.community/k8school](http://ola.community/k8school).

**MEN’S CLUB MEETING**

Thursday, October 19th  
6pm in the Lower Hall

All men of the parish are welcome to attend!

**BRICK PAVER PROJECT**



**LAST CHANCE!**

Be a part of the Our Lady of Angels Family Forever!  
Buy a Brick Today! Orders can be placed at:  
[www.brickmarkersusa.com/donors/olas.html](http://www.brickmarkersusa.com/donors/olas.html)

**WORLD MISSION SUNDAY**

**SECOND COLLECTION NEXT WEEKEND**

Next weekend, we will celebrate World Mission Sunday. Each year, the entire Church is invited to support the young mission dioceses in Africa, Asia, the Pacific Islands, Latin America and Europe where priests, religious and lay leaders serve those in need. Please keep the Missions in your prayers and be generous in next week’s collection. Thank you!

**MASS INTENTIONS**

Your prayers are requested for the deceased members of the parish and especially for those who died recently,  
**Vicente Marquez, Genie Slakmon,** and the following for whom Mass will be offered:

|                     |                  |                                 |                         |                       |                          |
|---------------------|------------------|---------------------------------|-------------------------|-----------------------|--------------------------|
|                     |                  | <b>SAT, Oct 14: 5:00 p.m.</b>   | Joseph and Maria Emilio |                       |                          |
| <b>SUN, Oct 15:</b> | <b>7:00 a.m.</b> | All Parishioners                | <b>10:00 a.m.</b>       | Gladys Scherba        |                          |
|                     | <b>8:30 a.m.</b> | Ralph Behling                   | <b>11:30 a.m.</b>       | Amorita Castillo      |                          |
|                     |                  | <b>6:00 p.m.</b>                | Keith O’Regan           |                       |                          |
| <b>MONDAY:</b>      | <b>6:30 a.m.</b> | Secondo & Teresa Zan            | <b>8:00 a.m.</b>        | Barbara Arena         | <b>11:30am at Marian</b> |
| <b>TUESDAY:</b>     |                  | Chuck McGuigan                  |                         | Lillian Privitera     | Serafino Fontana         |
| <b>WEDNESDAY:</b>   |                  | Fr. Cornelius Hyland, OFM, Cap. |                         | Joseph Mocelin        | Jim & Marjorie McAloon   |
| <b>THURSDAY:</b>    |                  | Michael Porrazzo                |                         | Special Intention     | Andy Goldstein           |
| <b>FRIDAY:</b>      |                  | Special Intention               |                         | Mollie Dooher Maguire | Girard Marcotte          |
| <b>SATURDAY:</b>    |                  | Ina Reddan                      |                         | Walt Folsom           | Barbara Arena            |
|                     |                  |                                 |                         |                       | Cesar & Blanca Enriquez  |
|                     |                  | <b>SAT, Oct 21: 5:00 p.m.</b>   | John & Ada Mocelin      |                       |                          |
| <b>SUN, Oct 22:</b> | <b>7:00 a.m.</b> | All Parishioners                | <b>10:00 a.m.</b>       | Paul Flanagan         |                          |
|                     | <b>8:30 a.m.</b> | Judy Biancalana                 | <b>11:30 a.m.</b>       | Gladys & John Rosberg |                          |
|                     |                  | <b>6:00 p.m.</b>                | Niall Donohue           |                       |                          |

## SCHOOL OF RELIGION

Classes begin on:  
October 16 for Grades 7 & 8  
Mondays from 7:30-8:45pm

If you have any questions or concerns, please call the School of Religion at (650) 347-3671.

## OCTOBER CAFE OLA

**October 15th after the 8:30 & 10am Masses**

We will be pumpkin decorating and serving extra food: bagels, fruit, donuts, juice, coffee, etc. We will also have all kinds of children's games! Please join us for this fun parish event this weekend.

## VOLUNTEER OPPORTUNITY

Our Hospitality Team provides coffee and donuts in the Hall of Saints after the 8:30am and 10:00am Masses every Sunday. Please contact Natalie Morrone at (408) 893-2003 or [ndmorrone@gmail.com](mailto:ndmorrone@gmail.com) to volunteer.



## NEW PARISHIONERS

Welcome to Our Lady of Angels Church! We encourage you to officially register as a parishioner on our website ([www.ola.community](http://www.ola.community)). We also invite you to visit the Rectory

to personally meet one of our priests and pick up a parish directory as well as to get acquainted with the parish facilities and upcoming events. Again, welcome to Our Lady of Angels!

## ATTENDANCE COUNT

During the month of October, an attendance count is being taken at all Masses. Thank you!

## YOUTH GROUP (7th - 12th graders)

Please join our Youth Group Meetings held on the 1st and 3rd Sunday of each month from 3-5:00pm in the Youth Center followed by Mass at 6pm.



## CATHOLIC WORKER HOUSE

### TAKE THEM A MEAL

Please consider providing a meal to those in need. We are in need of volunteers this Fall! This is a great way to help others and/or to log in school service hours! If you would like to sign up, please visit [TakeThemAMeal.com](http://TakeThemAMeal.com) and locate the schedule by entering *OLA* as the recipient last name, and 7793 as the password. For more information, please contact Laura Blue at (415) 509-1719.

## NOTRE DAME HIGH SCHOOL IN BELMONT OPEN HOUSE

**October 22 from 11am-1:30pm**

The Open House will provide an opportunity to meet teachers, athletic coaches, and current students. Families can register for the event by calling (650) 595-1913 x370 or by email at [rshanley@ndhsb.org](mailto:rshanley@ndhsb.org).

## ALTAR SERVER SCHEDULE - OCT 21 & 22

|                |                                 |
|----------------|---------------------------------|
| <b>5:00pm</b>  | B & A & E Chesnosky             |
| <b>7:00am</b>  |                                 |
| <b>8:30am</b>  | A & M Reed, L Frazier           |
| <b>10:00am</b> | M Benton, W Alexander, J Viduya |
| <b>11:30am</b> | B & R Co, S Philip              |
| <b>6:00pm</b>  | G & B Hetherington, L Habelt    |

## OCTOBER 21 & 22 READER & EXTRAORDINARY MINISTER SCHEDULE

### Reader Schedule:

|                |                |
|----------------|----------------|
| <b>5:00pm</b>  | M Raitlon      |
| <b>7:00am</b>  | K Flynn        |
| <b>8:30am</b>  | C & R Nickolai |
| <b>10:00am</b> | A Bick, M Lico |
| <b>11:30am</b> | J Brooks       |
| <b>6:00pm</b>  | E Barnabe      |

### Extraordinary Ministers of Holy Communion Schedule:

|                |  |
|----------------|--|
| <b>5:00pm</b>  | B & W Bankovitch, H Leupp, P Crampton, G Chrisman    |
| <b>7:00am</b>  | D & J Gibbs, D Rich, S Bennett                       |
| <b>8:30am</b>  | A & J Hahn, C Rockwell, G L'Heureux, D Magner        |
| <b>10:00am</b> | D Fama, M Zshornack, L Novak, K Diefendorf, A Cotter |
| <b>11:30am</b> | F & R Soto, B Menicucci, D Rodriguez, N DeJesus      |
| <b>6:00pm</b>  | M & N Oblea, C Frye, G Rebosura, J Marucut           |

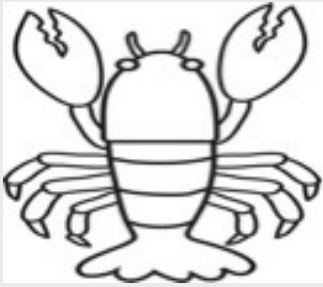
## READINGS FOR THE WEEK:

|                   |   |
|-------------------|---|
| <b>Monday:</b>    | Rom 1:1-7; Ps 98:1-4; Lk 11:29-32                               |
| <b>Tuesday:</b>   | Rom 1:16-25; Ps 19:2-5; Lk 11:37-41                             |
| <b>Wednesday:</b> | 2 Tm 4:10-17b; Ps 145:10-13, 17-18;<br>Lk 10:1-9                |
| <b>Thursday:</b>  | Rom 3:21-30; Ps 130:1b-6ab; Lk 11:47-54                         |
| <b>Friday:</b>    | Rom 4:1-8; Ps 32:1b-2, 5, 11; Lk 12:1-7                         |
| <b>Saturday:</b>  | Rom 4:13, 16-18; Ps 105:6-9, 42-43;<br>Lk 12:8-12               |
| <b>Sunday:</b>    | Is 45:1, 4-6; Ps 96:1, 3-5, 7-10;<br>1 Thes 1:1-5b; Mt 22:15-21 |

## OUR LADY OF ANGELS PARISH MISSION STATEMENT

As disciples of Jesus Christ, and in the spirit of Saint Francis, Our Lady of Angels Catholic family welcomes and embraces one another and those who come to us. Through worship, ministry and loving service we provide for one another's spiritual and communal well being. In being so nourished, we, in turn, reach out to serve the larger community.

**SATURDAY, NOVEMBER 11, 2017  
OLA GYM - 6:00 PM**



## **2<sup>nd</sup> ANNUAL LOBSTER FEED**

This exciting event will benefit  
Michelle Ostertag's  
Rafiki wa Magendeleo Trust  
Scholarship Fund.

Rafiki is a mentoring organization based in Kenya, Africa. It established the Lusii Training and Resource Center. Voted "Exemplary Training Institution That Exceeds Government Standards" by the Kenyan government, this institution educates and empowers marginalized and vulnerable children, enabling them to build their educational capacities, which engenders both sustainable personal and community-wide changes. OLA is proud of its sisterhood alliance with Rafiki.

**OLA parishioners and friends are  
invited to this wonderful Lobster Feed  
Compliments of  
Marc & Sue Worrall  
The New England Lobster  
Market & Eatery**

### **RESERVATIONS**

*Please use the reservation forms found in the  
pews to make your reservations.*

*(\$90 per person)*

*Reservation Deadline: November 8th*